

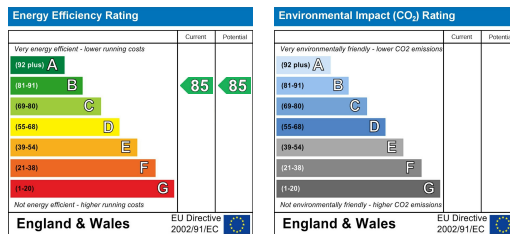
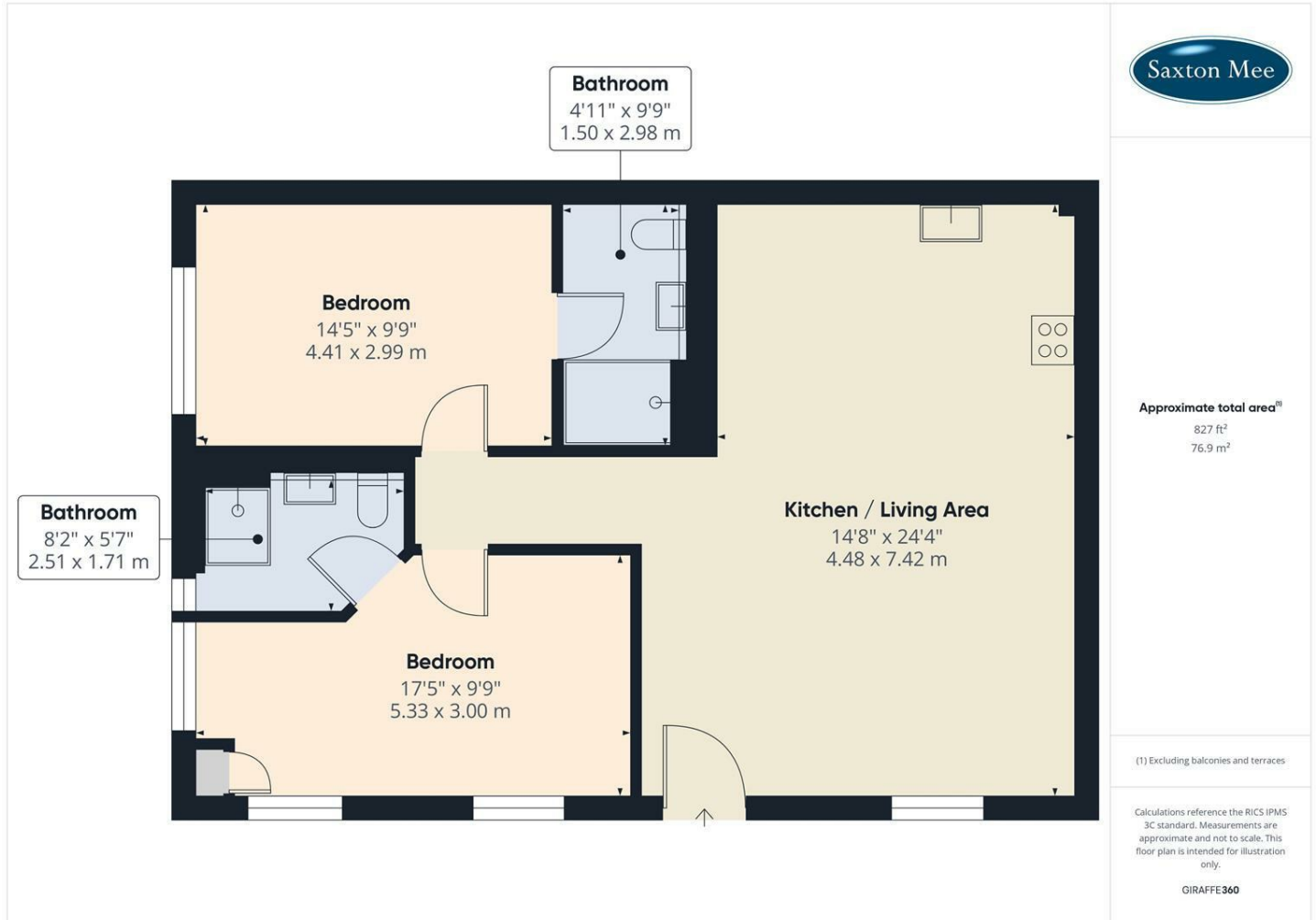


Apt 6 Columbell Court, Matlock DE4 2SA **£1,050 PCM**

Columbell Court is an exclusive new development of just 10 luxury apartments, perfectly situated in the highly desirable village of Two Dales, close to the historic town of Matlock. Designed with both style and comfort in mind, the development offers a choice of 6 spacious two bedroom apartments and 4 well proportioned one bedroom homes, each finished to a high standard. With everyday amenities within easy reach and the stunning Derbyshire countryside on the doorstep, Columbell Court provides the perfect balance of convenience and rural charm.

Externally, residents will benefit from an allocated parking space, and the development itself has been designed to blend harmoniously with its surroundings. With the rolling hills of the Peak District close by, yet with shops, schools, and transport links easily accessible.

This property is offered unfurnished and is available on a 12 month tenancy. Please note that smoking is not permitted within the property. We are currently waiting on the Energy Efficiency Rating and Council Tax Band.



Banner Cross
Hathersage
Bakewell
Matlock
www.saxtonmee.co.uk

949-951 Ecclesall Road, Sheffield S11 8TN
3 Bank View, Main Road, Hathersage S32 1BB
Matlock Street, Bakewell DE45 1EE
27 Causeway Lane, Matlock, DE4 3AR

T: 0114 268 3241
T: 01433 650009
T: 01629 815307
T: 01629 828250

E: bannercross@saxtonmee.co.uk
E: hathersage@saxtonmee.co.uk
E: bakewell@saxtonmee.co.uk
E: matlock@saxtonmee.co.uk